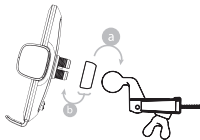


ENCASED

CELL PHONE CRADLE DASH MOUNT

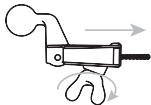
PHONE CRADLE AND MOUNT ASSEMBLY

- › Place fastener ring over round knob of mount with narrow end facing mount
- › Insert into socket of cradle and fasten ring



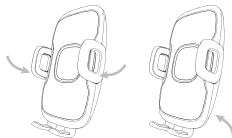
MOUNT SETUP

- › Insert CD mount into CD slot and tighten fastener until mount is securely in place while ensuring not to overtighten



DOCK AND RELEASE DEVICE FROM CRADLE

- › Dock: Seat device in the cradle and press both sidegrips inward until securely in place
- › Release: Press button on back of cradle to release.



What do you think? Please take a minute to tell us at encased.com/ithink

Contact us: hello@encased.com Warranty information: Visit encased.com for details.