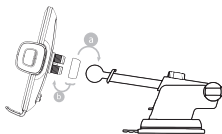


ENCASED

CELL PHONE CRADLE DASH MOUNT

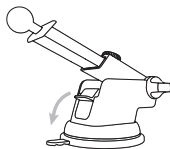
PHONE CRADLE AND MOUNT ASSEMBLY

- › Place fastener ring over round knob of mount with narrow end facing mount
- › Insert into socket of cradle and fasten ring



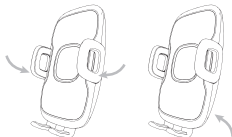
MOUNT SETUP

- › Choose mounting location and ensure it is clean and dry (For optimal adhesion, mount and surface should be above 60°)
- › Release lock: pull lever away from mount
- › Remove protective film from adhesive on the underside of the mount
- › Position mount in mounting location and press into place
- › Lock: press lever towards the mount



DOCK AND RELEASE DEVICE FROM CRADLE

- › Dock: Seat device in the cradle and press both sidegrips inward until securely in place
- › Release: Press button on back of cradle to release.



What do you think? Please take a minute to tell us at encased.com/ithink

Contact us: hello@encased.com Warranty information: Visit encased.com for details.